

CHRISTMAS
SPECIAL

NEW
HYBRIDS

MOUNTING
ORCHIDS

BLACK ROT

Orchidology

NEWSLETTER DECEMBER 2022



Christmas Set 2.
Miniature Orchids Mounting Set.
4 Orchids Bundle R449



We have a new Christmas Special this holiday season, focusing on mounting orchids, take a look at our new catalogue to see what we have to offer. Catalogues www.orchidology.co.za. Email your orders to paul@orchidology.co.za.



Orchidology Shop

Our orchid shop will be open some week days during the festive season but closed on public holidays. 17 December we will have a demonstration on mounting orchids

READ MORE

New Hybrids

We have seen our first hybrid creations in 2022. Some are good enough to be cloned and registered at the RHS

READ MORE



CHRISTMAS
SPECIAL

NEW
HYBRIDS

MOUNTING
ORCHIDS

BLACK ROT

Orchidology

CHRISTMAS SPECIAL



We have a new catalogue for our Christmas special this holiday season . 4 Different bundles for mounting orchids. The bundles include orchids, a mounting kit and instructions. Also a new cymbidium bundle set, these are larger plants than what we had previously available.

Christmas Set 4.

Collector Orchids Mounting Set.
3 Orchids Bundle R399



Set of Collector Orchids is for beginners , includes 4 different orchids. Comes with instructions and a mount on wooden mounts for garden. **Set of 4 Orchid miniatures** included in the bundle

- Mounting Instructions
- 4 X Wooden mounts
- Coir fibre
- Florist wire
- Labels
- Vanda ceorulea x Motes Hybrid
- Epc. Rene Marques x cucullata
- Ansellia africana
- Laelia autumnalis



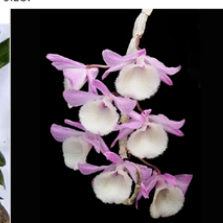
Email paul@orchidology.co.za to order or enquire . Packaging & Courier available at R136. Special December or while stocks last.

Online orders

Catalogues can be downloaded from www.orchidology.co.za and orders sent via email to paul@orchidology.co.za. Deliveries are done via courier starting at R136

Christmas Set 3 Miniature Dendrobium Mounting Set 3 Orchids bundle R399

Set of Dendrobiums ideal for beginners , includes 3 miniature orchids. Comes with instructions and materials for wooden mounts. Orchids are not in flower but are in bud size.



Included in the bundle

- 1 x Den. miniatures
- 1 x Den. miniatures
- 1 x Den. miniatures
- Mounting Instructions
- Care Guide
- 3 X Wooden mounts
- Coir fibre
- Florist wire
- Labels



In Store

Our christmas specials are also available at our store Orchidology Shop.

CHRISTMAS
SPECIAL

NEW
HYBRIDS

MOUNTING
ORCHIDS

BLACK ROT

Orchidology

S H O P



Our orchid shop together with Coula's Coffee shop was opened 23 October in Tierpoort Pretoria
The shop houses a good selection of orchids and is run by Joshua Roos. The shop and cafe are open Saturdays and Sundays from 09:00 to 15:00.



Mounting Orchids

Come visit our shop on the 17th December, at 11:00 we will have a talk on how to mount your orchids on wood. Demo and talk will last 40 minutes. Mounting kits with plants are available.

Shop open times

Our shop open times this December will be 9:00-14:00 on 7-11, 14-18, 21-23, 28-30
From January 2023 the shop will be open weekends 9-15:00. Coula's coffee shop will be closed during the festive season



NEW ORCHID HYBRIDS

BY ORCHIDOLOGY

DEN ANGEL BABY X HAMANA LAKE

This is a remake of a hybrid called TDares Angel Lake, Registered by Tdares in 2012

HYBRIDISING HISTORY

Pollinated at Orchidology by Orchidology 2017. Sown at King plants 2018. Deflasked 2019. First flowering 2019.

PROGENY

Small dendrobium with upright canes varying between 5-20cm in height, small and compact. Flowers early to late spring with purple, pink, mauve and white flowers. Flowering can be triggered by 2 weeks of chilling to flower outside of their normal season.



TDARES ANGEL LAKE



ANGEL BABY X HAMANA LAKE



ANGEL BABY X HAMANA LAKE



ANGEL BABY X HAMANA LAKE

NEW ORCHID HYBRIDS

BY ORCHIDOLOGY

ONC GOLDEN AFTERNOON X TOL. JAIRAK 'GOLDEN FAN'

A novelty cross between a large flowering oncidium Golden afternoon and small toolumnia Jairak Flyer 'Golden Fan'

HYBRIDISING HISTORY

Pollinated at Orchidology by Orchidology 2017. Sown at King plants 2018. Deflasked 2019. First flowering 2021.

PROGENY

Small toolumnia like plants , hard succulent leaves , no psuedobulb present 8-15cm high. Flowers on 20-25cm canes, spotted brown on yellow with some orange. Prefers warm growing conditions



NEW ORCHID HYBRID

BY KING PLANTS

CYM RUBY PEARL

A cross between Cym. Mary Green and Cym.Mem. Andy Warhol, both awarded pendulous cymbidiums

HYBRIDISING HISTORY

Pollinated by Richard King and sown at King plants 2012. Flowered and registered by Orchidology.

PROGENY

Foliage of 40-50cm, bearing pendulous flowers in winter. Sepals and petals beige, cream to bright apple green. spotted lip, Pink to Ruby with dark red to black spotting. Sprays of 20 to 30 blooms.



CHRISTMAS
SPECIAL

NEW
HYBRIDS

MOUNTING
ORCHIDS

BLACK ROT

New Releases



2 New releases, seedlings 1 year out of flask, growing well. Available in 9cm pots @ R80 each.



Laelia Splendid King

OS2054 Laelia anceps x Splendid
Spire

A cross between two hardy Laelia ,
suitable for out door and mounting.

A remake by King Plants.

Ansellia africana

A2101/A2001 Ans. africana 'Dusty Compact' x 'Speckles'
Hybrid created by Richard king and seed sown at
King plants.

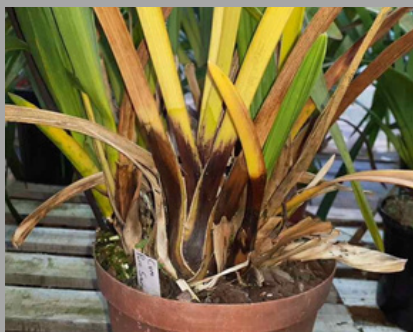
These will be compact , hardy with upright stems

Reverse cross also available A2102 /A2002 Ans.

africana 'Speckles' x 'Dusty Compact'.



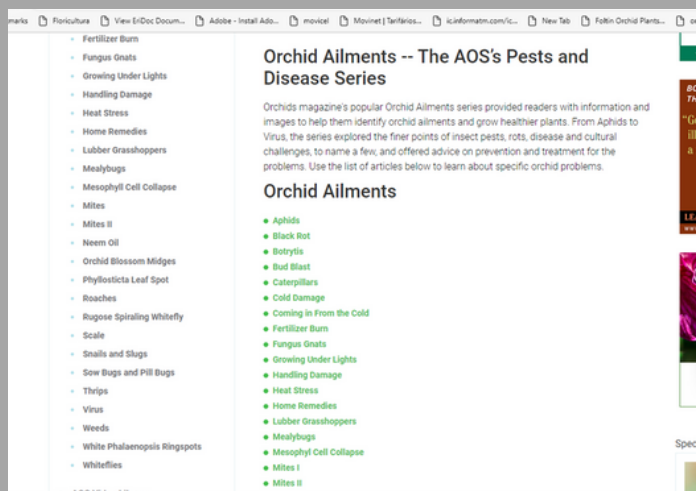
Black Rot



A cymbidium grower's worst nightmare is 'Black Rot' some strains worse than others, but immediate action always required. Various strains can attack your perfectly healthy cymbidium during the hot humid, wet summer months. Above is *Phytophthora multivesiculata*

Prevention

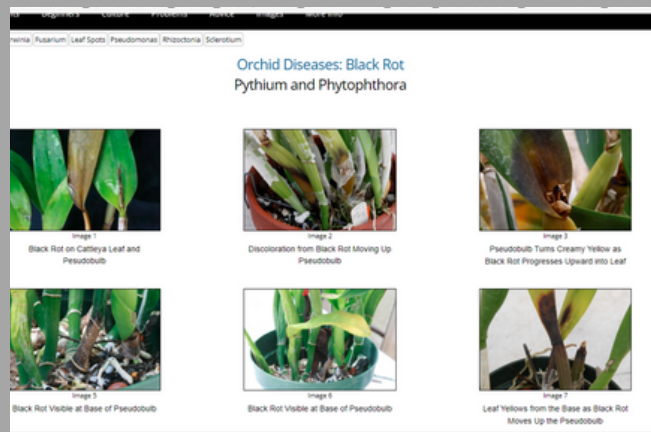
Improve sanitary conditions, good ventilation and air movement. Pots, benches, tools and water sources must be sterile. Black Rot is spread via water, prevent plants from remaining wet for long periods, standing in water (they should stand 90cm above ground level to prevent water splashing on them from the ground). Prevent overcrowding of plants. Improve light intensity to near maximum the orchid can handle. Immediately remove infected plants from growing area and sterilize benches



BLACK ROT AT THE AMERICAN ORCHID SOCIETY WEB PAGE.
WWW.AOS.ORG/ORCHIDS/ORCHID-PESTS-DISEASES.ASPX

Treatment

Remove infected plants from your growing area. Cut infected tissue away from healthy parts of the plant. Always cut below the infection. Sterilize cutting tool in solution of bleach or Jik with each cut. Seal wounds with cinnamon, Sulphur or rose seal. Dip plant in systemic fungicide solution. Repot your orchid.



ORCHID DISEASES (STAUGORCHIDSOCIETY.ORG)
[HTTPS://STAUGORCHIDSOCIETY.ORG/](https://STAUGORCHIDSOCIETY.ORG/)

Mounting Orchids



Orchids do very well mounted on a tree or piece of wood .You will need , coir, thin wire, and a log/wood (if you do not plan to mount your orchid on a tree). The best time to mount is when the orchids start shooting out new growths and roots, however, if proper care is provided you may mount your orchids any time of the year.



Take your orchid out of its pot and remove excess medium. Place the orchid directly onto the tree branch or mount . Cover the roots with coir. The last step is to carefully wrap thin wire around the coir layer and the branch or mount to securely attach the orchid

You can mount or hang your mounted orchids on indigenous thorn trees or deciduous trees that will protect your plants from direct sunlight..

Find a spot that gives your plant plenty of morning sun but protects it from midday and afternoon sunshine – North East side of the tree is best.

Orchids require a sheltered spot away from dry winds and frost. Miniature orchids will require even more protection from the elements and are more suited to terrariums or indoor culture.

